

# Milsoft AEON

**Automated Engineering and Operations Network**





# Discover Milsoft AEON:

## The Future of Circuit Modeling and Grid Analysis

Milsoft AEON, Automated Engineering and Operations Network, streamlines the way utilities analyze, maintain, and optimize electrical distribution systems. By leveraging advanced AMI and SCADA integration with automated load flow analysis, Milsoft AEON does the work behind the scenes so you don't have to. Have load models readily available for analysis in WindMil, view live Fault Location analysis results in DisSPatch Outage management, or stay in the know with email based alerts of potential problem areas.





# Key Benefits:

- Reduce Model Setup Time: Replace the tedious process of load allocation with tools to automate the creation of load snapshots
- Improve Circuit Model Accuracy: Identify and correct discrepancies effortlessly by using your AMI data to detect outliers in your circuit model
- Seamless Integration: Unlock actionable insights from your smart meter and SCADA data.
- Restore Outages Quicker: Give dispatchers immediate access to the potential fault locations of outages, resulting in crews finding the root cause of outages faster.
- Replay History: re-calculate load snapshots over a desired time period to see what impact model changes had on those results

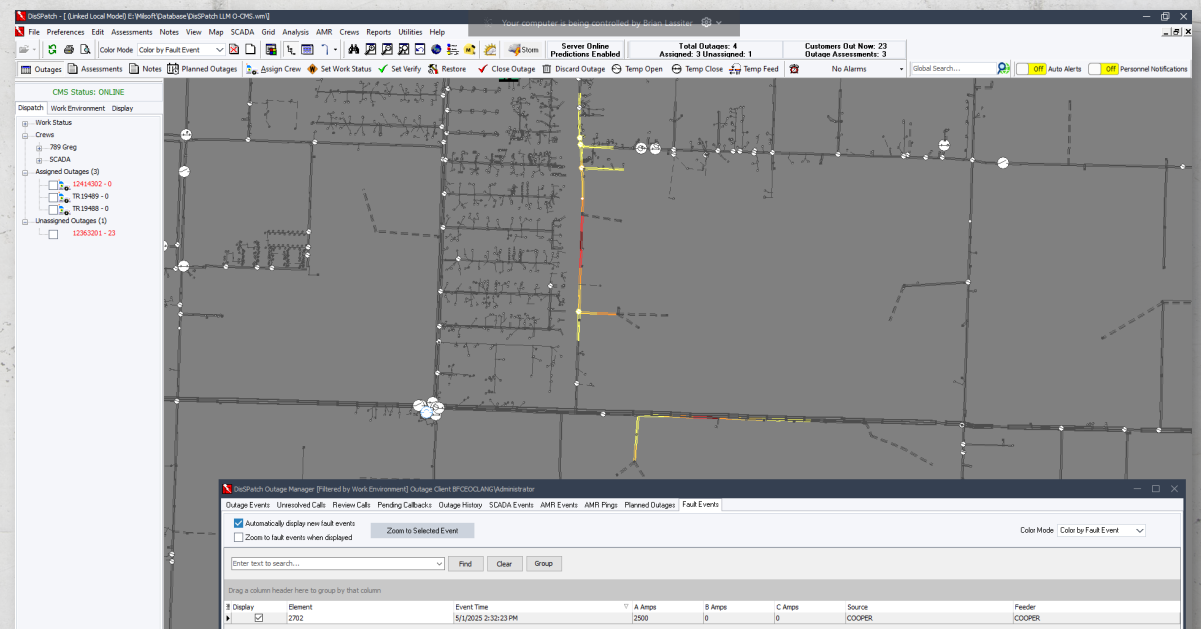
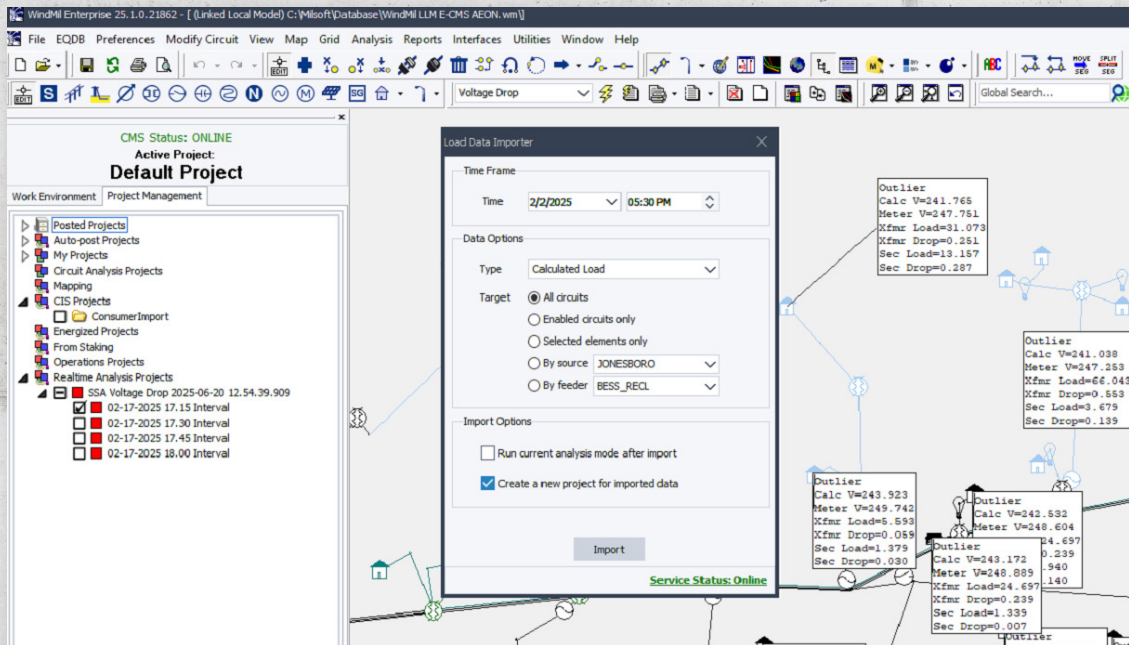


# Features:

- Model Validation with Outlier Analysis
- Automated Load Allocation
- Archiving of Load Data
- Auto Fault Location in OMS
- Historical Time Series Analysis
- Storage of AMI, SCADA and Load Flow Results Data
- Load Flow Alarms

***Leverage Milsoft AEON to provide users key data exactly when they need it.***







# For more information or to schedule a demo:

Email us at: [sales@milsoft.com](mailto:sales@milsoft.com)

or

Call: 800.344.5647

