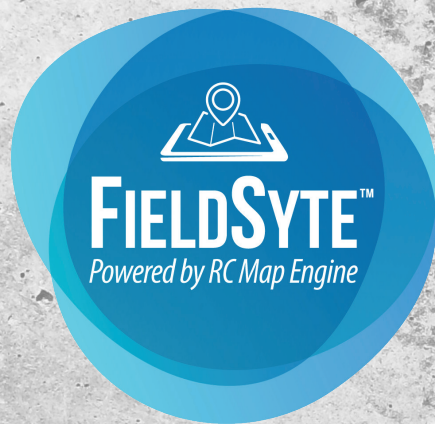




# Milsoft FieldSyte™





# Milsoft FieldSyte

Put the full power of Milsoft's engineering and operations solutions in the palm of your hand with Milsoft's latest product, FieldSyte™. FieldSyte includes a robust set of tools to help you work efficiently and effectively from wherever you are, no matter your network coverage. Search and trace your electrical model, work outage tickets, integrate with AVL and AMI systems, document a tailgate meeting, or perform inspections and right of way tasks. FieldSyte currently has over a dozen different modules with many more on the way, allowing you to build out the solution that fits your needs. Available for use on iOS, Windows, and Android devices.

## FieldSyte Includes:

- Milsoft Model and Customer Data
- Open Street Map Landbase
- Fault Locate
- Map Notes
- Model Trace
- Sketch
- Measure
- Navigation
- User Location Tracking
- External GPS Integration



# What Else Can You Do with FieldSyte?

FieldSyte's highly configurable platform offers several additional Operations and Mapping modules to choose from. These operations and mapping modules provide more capabilities to your field workers to help them do their jobs more efficiently.

## FieldSyte Operations Modules:

### • OMS Tickets

- Two Way Outage Tickets
- ETOR Set/Edit
- Crew Assign/Unassign
- Verify
- Restore
- Cause Code Set/Edit

### • OMS Assessments (Coming Soon)

- View OMS Assessments
- Create/Edit OMS Assessments
- One Shot/Hot Line Tags

### • Map Assessments

- Cautions, Tailgates, Places,
- Incidents, Jobsite Observations

### • Live Model (Coming Soon)

- View Temporary Operations
- Create Temporary Operations
- Live Outage Model Tracing
- Hold Cards

### • AMI Integration

- View Meter On/Off Responses
- Ping Meter
- Ping Meters Downline
- View Blink Counts

### • AVL Integration

- View vehicle locations on map

### • Tickets/Observations/Inspection Books

- Pole
- UG
- Meter
- Substation
- Line Patrol
- Storm Patrol
- DG Meters
- Sectionalizing Study Kit

### • Vegetation Tickets

### • Vegetation Management

- With Tickets

### • Truck Inspections

### • Map-less Forms

- Ability to create up to 10 forms not associated with the map
- Ability to create an unlimited number of forms not associated with the map

# FieldSyte Map Options:

## • Satellite Maps

- Bing w/Customer key or
- Here Aerials or
- Mapbox Standard Imagery

## • Weather Layers

- Aeris streaming weather service

## • Custom Published Maps-Single

- Display one of the following published map/data sources:
  - Spreadsheets
  - Mapbox Layers
  - Shapefiles
  - CAD Imports
  - ESRI Geodatabase

## • Custom Published Maps-Multiple

- Display any number of published map/data sources from the following:
  - Spreadsheets
  - Mapbox Layers
  - Shapefiles
  - CAD Imports
  - ESRI Geodatabase

## • Custom Live Maps

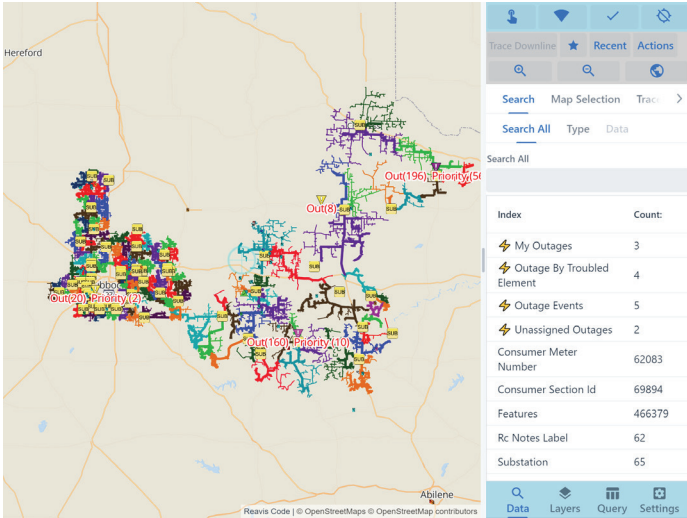
- Connection to a single source/table live map from another system
- Connection to a single live map with multiple data tables
- Connection to a multiple source/ multiple table live map

## • Custom Export

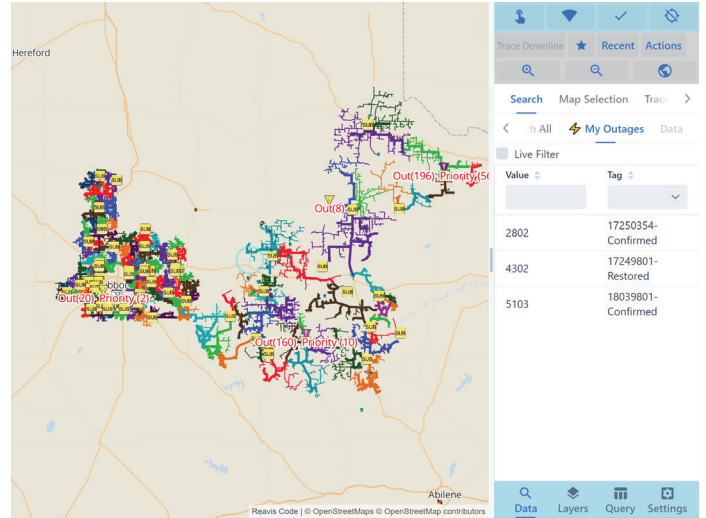
- Custom export of data into one of the following formats:
  - Shapefile
  - Geodatabase
  - CSV
  - GeoJson

## • Custom Raster Maps

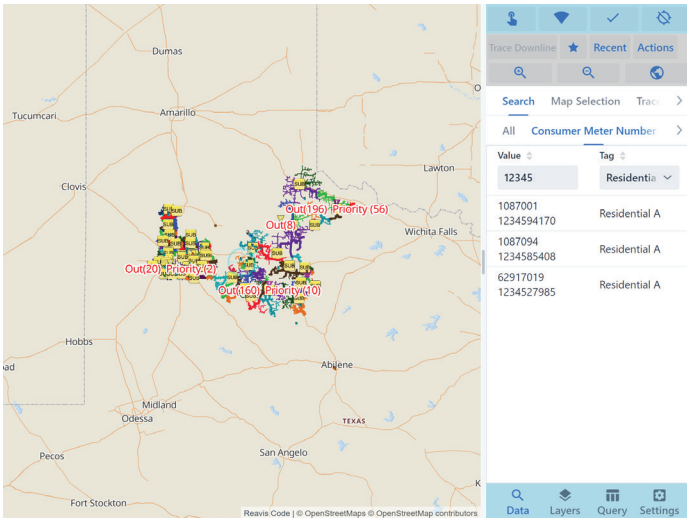
## Color by Feeder



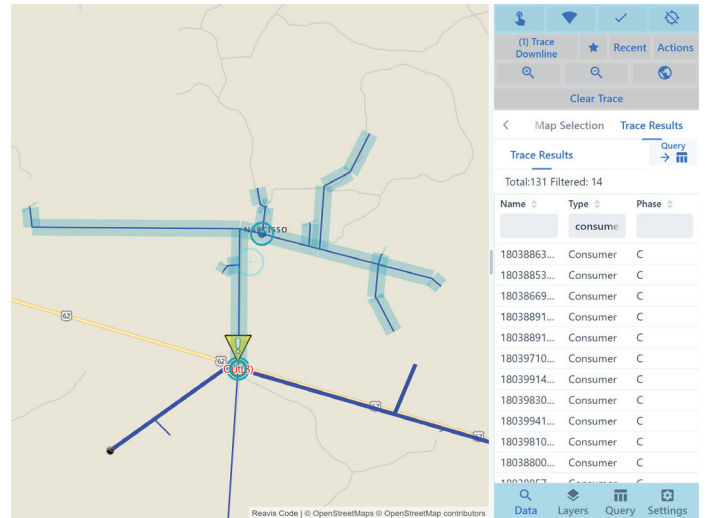
## My Outages



## Search by Consumer Meter Number



## Trace Downline Results



## Verify Dialogue

Set Verify Status

Element Type: OverheadRecloserThreePhaseGanged

Element Name: 4503

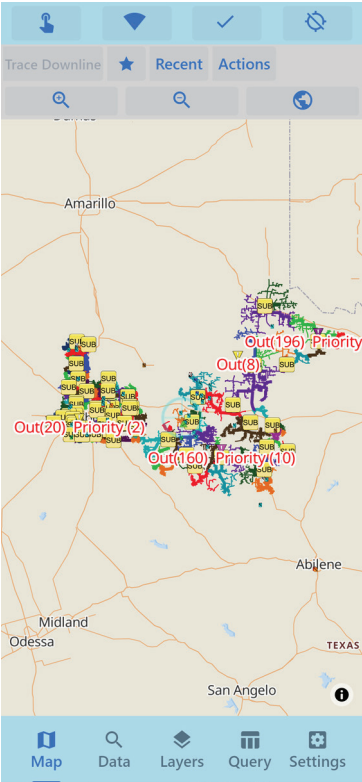
☒ All Phases The Same

	Power Supply	Device Status
A	LIVE	OPEN
B	LIVE	OPEN
C	LIVE	OPEN

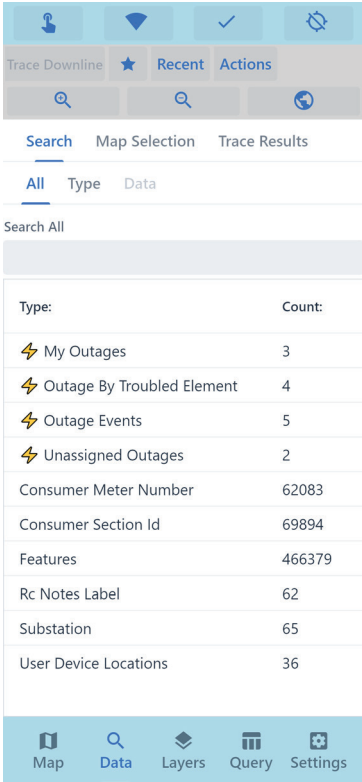
Submit Cancel

# iPhone Sample Screenshots

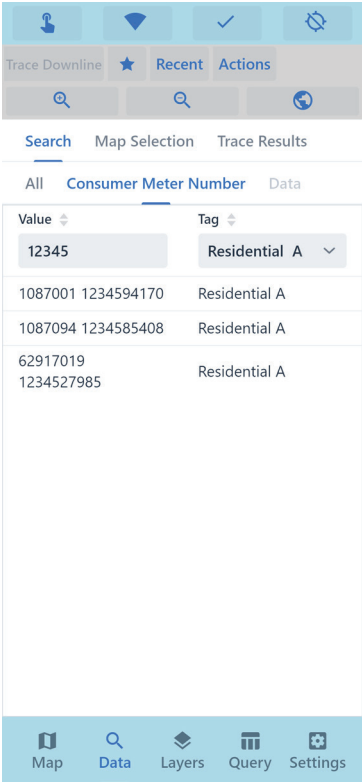
## Color by Feeder



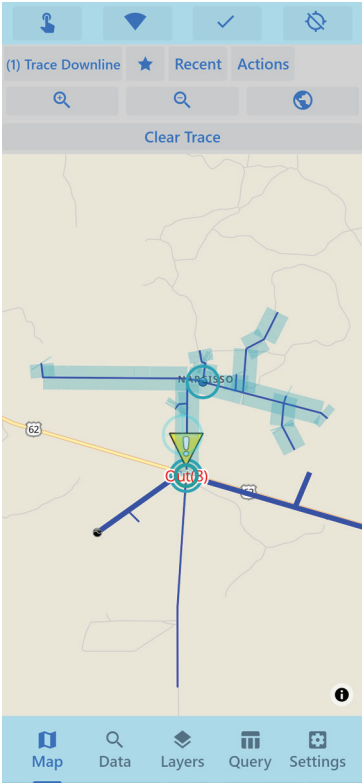
## Data Tab



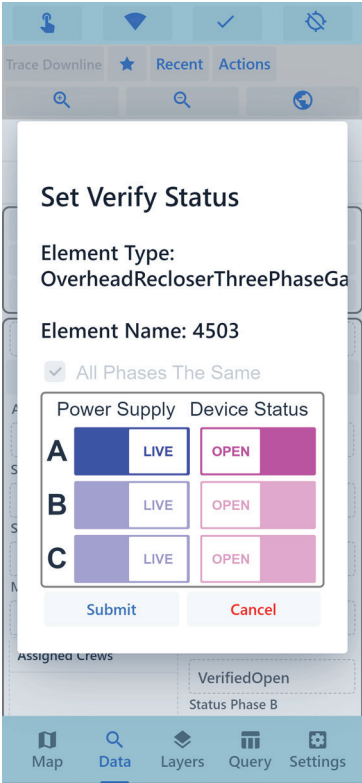
## Search by Consumer Meter Number



## Trace Downline Results



## Verify Dialogue





***For more information  
or to schedule a demo:***

***Email us at: [sales@milsoft.com](mailto:sales@milsoft.com)***

***or***

***Call: 800.344.5647***

