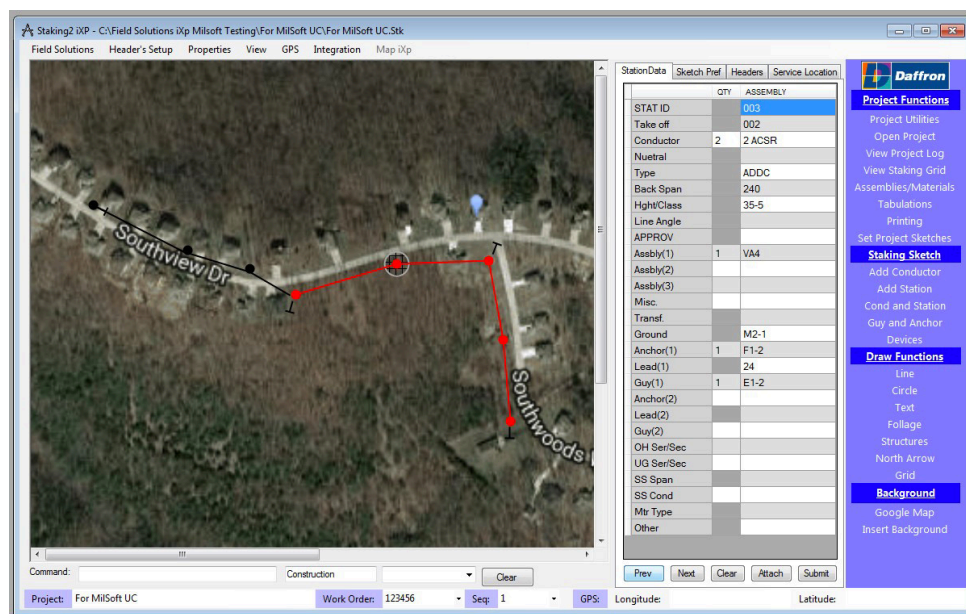


# Milsoft Staking<sup>iXp</sup>

## Enhancing the experience in the field

Milsoft Field Solutions have been significantly enhanced and are designed to help you eliminate those costly processes, while enriching the experience and the results for everyone involved.

Staking<sup>iXp</sup> allows you to automate work order processes directly from the staking process, creating front-end digital data sources for CIS, GIS, and other back-end operations and engineering systems. By using our PC-based Staking with integrated Esri-based mapping, processes can be streamlined, resulting in greater efficiency and higher levels of customer satisfaction.





## Value

Milsoft offers one of the most robust yet cost-effective staking solutions available in the utility market. As a utility-specific solution, we've made sure that it represents a best-practice approach to the staking process—one that is enhanced through work order automation and accumulation of plant statistics. We also offer a Map solution to accompany Staking<sup>ixp</sup> – one that offers a cost-effective solution to view Esri-based maps.

If you are looking for a better work flow and work order design tool, Staking<sup>ixp</sup> is an excellent solution. It greatly enhances design and estimating on projects and helps to minimize processes to work order management and GIS systems.

## Workflow

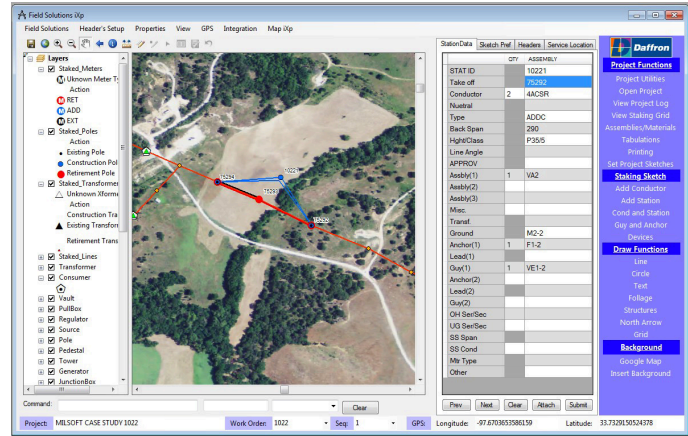
As an enhanced workflow, Staking<sup>ixp</sup> provides users with a number of improved processes for staking new or system improvement jobs. Users can create assemblies representing inventory groupings that can then be added to new staking projects for Work Order and Inventory purposes. Assemblies can be represented as overhead or underground, and Staking<sup>ixp</sup> will allow you to produce more accurate and efficient sketches for workers to refer to in the field.

You can drop work orders automatically on the map by placing poles, conductor, transformer, meter, and service through our Staking<sup>ixp</sup>. When used with Esri-based maps, staking projects will obtain GPS coordinates directly from the map. GPS coordinates can also be obtained in the field, based on the user's current position.

Direct connectivity with other Milsoft systems means that you can generate work orders and update them directly from staking activity, and that you can submit them directly to the Work Orders that is in the Work Management System (WMS). Even Inventory synchronization is provided, and CPR data is updated on Work Orders. Material pick lists can be created with a single click, and variable conditions like pole class, conductor, service conductor, and take-off, are used to ensure correct materials are pulled for orders that are created.

# Milsoft Internal Integration

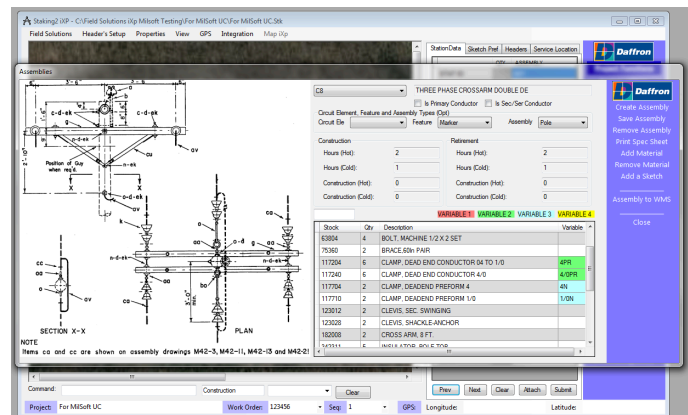
Tight integration with Milsoft CIS, Inventory, and Work Order systems provides the automation and process improvement needed for more efficient and consistent staking processes.



## Flexibility and Options

Staking<sup>ixp</sup> utilizes existing assembly data and operates on top of your existing Esri-based GIS system.

It offers an abundance of functionality to achieve a productive staking sheet, along with the ability to integrate tightly with a work order system.



## Integration Functionality (MultiSpeak)

Staking<sup>ixp</sup> is tightly integrated within the Milsoft front office solutions, but it also incorporates a MultiSpeak solution upon request. A MultiSpeak screen will allow users to quickly integrate with other vendors' solutions by means of MultiSpeak web services, allowing the user to enter the necessary information to go to an integrated GIS system or a work order system.

