

Milsoft Visual Analytics

Powered by:  + a b l e a u

When a picture says 1000 words...

No one can deny the power of collected and stored data. Contained in a broad range of data sets available to you is critical information that needs to be extracted, disseminated, and shared with your teams. There is no better way to turn your operational data into valuable information than by using Milsoft's Visual Analytics tools, powered by Tableau Software. Milsoft will provide a standard set of versatile templates to give stakeholders graphical dashboard views of critical operations metrics. Milsoft also offers authorship rights and training so that you can customize your reports to suit your organization's needs.

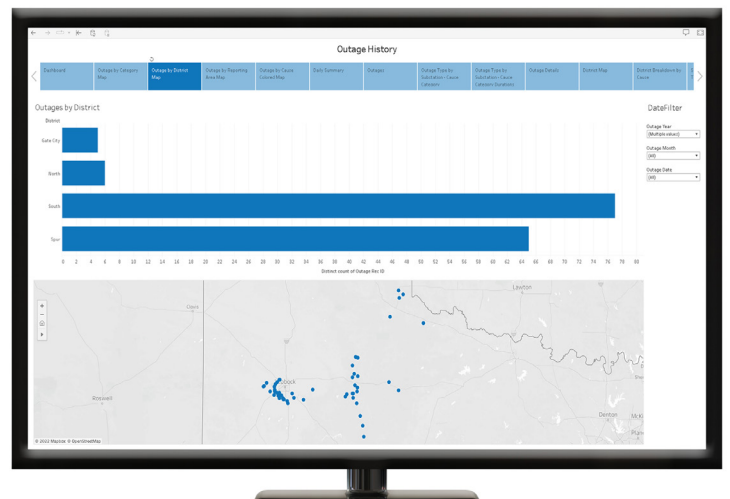
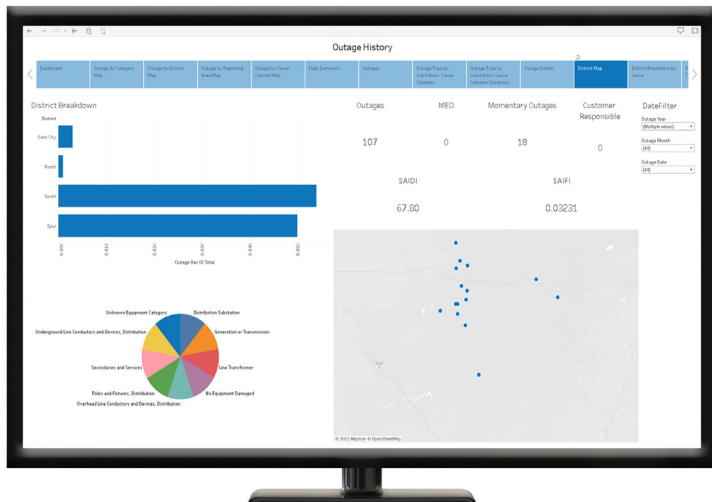
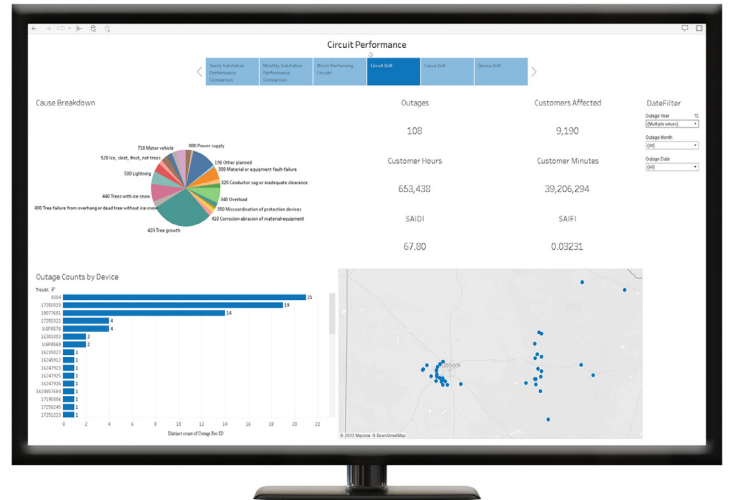
With Milsoft Visual Analytics, you'll be able to visualize both the present and the past. For example, you can use dashboards during an outage that shows who's out of power, how many calls are coming in per minute, or the current total duration of the outages. It's really up to your utility, but the ability to report critical operational metrics to your

teams and your customers will improve situational awareness and communications that will enhance customer service. However, it does not stop there. Why not take archived data and compare them by year or feeders or substations? Use that amazing collection of stored data and turn it into compelling information that could lead to significant changes for the better of the utility and your customers.



Standard Reports Package

1. Outage History
 - a. Dashboard
 - b. Outage by Category Map
 - c. Outage by Reporting Area Map
 - d. Outage by Cause Colored Map
 - e. Daily Summary
 - f. Outages
 - g. Outage Type by Substation – Cause Category
 - h. Outage Type by Substation – Cause Category Durations
 - i. Outage Details
 - j. District Map
 - k. District Breakdown by Cause
 - l. Substation Outage Type Drill
2. Circuit Performance
 - a. Yearly Substation Performance Comparison
 - b. Monthly Substation Performance Comparison
 - c. Worst Performing Circuits
 - d. Circuit Drill
 - e. Cause Drill
 - f. Device Drill
3. Current Outages
 - a. Dashboard
 - b. Outages Map
 - c. Caller Information
 - d. Assessment Information
 - e. District Information
 - f. Crew Information
 - g. Outage Information
4. Customer Circuit Overview
 - a. Circuit Customer Breakdown
 - b. Circuit Drill
 - c. Customer Drill
5. Priority Customer Outage Information
 - a. Dashboard
 - b. Substation Drill
 - c. Circuit Drill
 - d. Customer Outage Drill



Hardware Requirements:

Please see the Tableau® website for specifications:
https://help.tableau.com/current/server/en-us/server_hardware_min.htm