

# New! Milsoft Mobility

Powered by **SEW**  
SMART ENERGY WATER

Milsoft has partnered with SEW to give your teams the ability to work on outages using mobile devices. Field workers can now view and work on outages that exist in the Milsoft DisSPatch® OMS on any mobile device. Milsoft Mobility provides field workers with the ability to set Estimated Time of Restoration, Verify Outages, Restore Outages, and Set Outage Cause Codes. Additionally, Milsoft Mobility which is part of the SEW Smart Mobile Workforce platform, allows utilities to work in Real-time to reduce response time and increase efficiency in emergency processes, hence reducing outage handling costs. The platform has optional add on modules such as:

- **Asset Management** – Manage, maintain, inspect and meter a large amount of GIS assets on the mobile device
- **Mobile Library** – Real-time access to reference documents from the mobile device
- **Work Orders** – Access assigned work orders on field with detailed information, required equipment & inventory, optimized route etc.
- **Service Requests** – Pro-actively create service request from the field improving customer experience and reducing SLA's
- **Dynamic Forms** – Manage safety, compliance, feedback and more by customized smart forms as per business needs
- **Communication** – Social collaboration and real time communication with colleagues improving FTR's
- **Expenses** – Capture and track all work related expenses for easy reimbursement and employee satisfaction
- **Time Sheets** – Record the hours worked on various tasks for easy project management

**MILSOFT**  
Utility Solutions

Find out more: [www.milsoft.com](http://www.milsoft.com) • 800-344-5647



With SEW we will provide a mobile platform for Milsoft Outage Software to enable Real Time Communication.

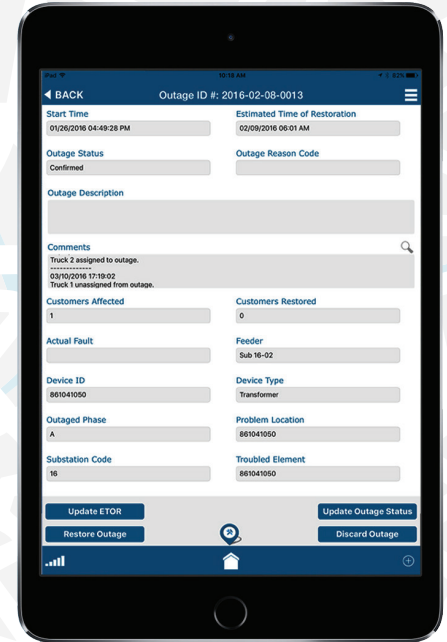
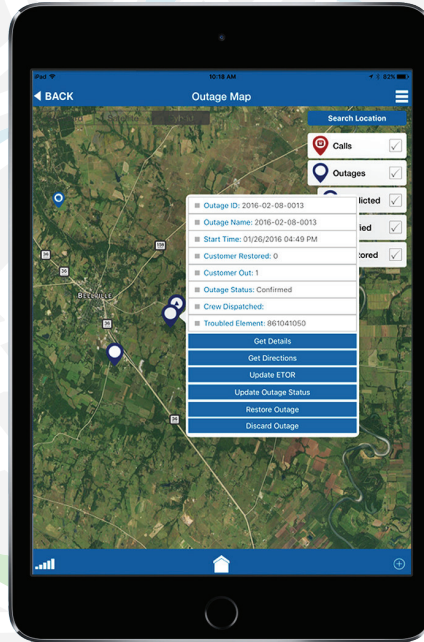
Here are a few sample views of **Milsoft Mobility**

Powered by **SEW**  
SMART ENERGY WATER

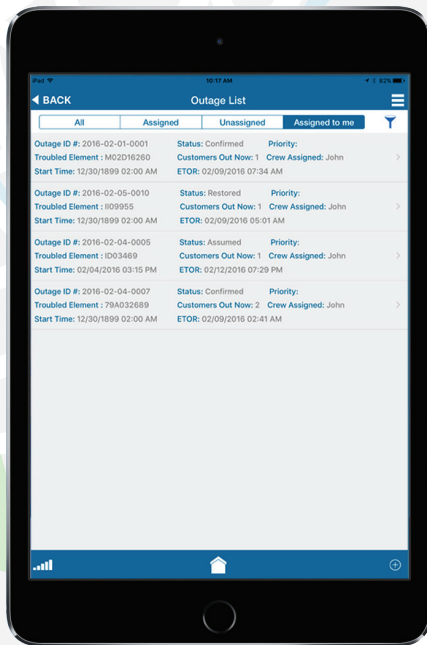
## Outage Map Terrain View



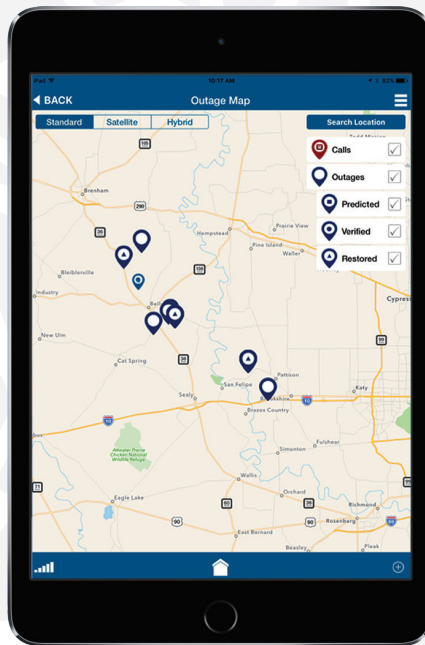
## Outage Map with ID



## Outage List



## Outage Map



About **SEW**  
SMART ENERGY WATER

Smart Energy Water (SEW) is the leading provider of cloud-based Software-as-a-Service (SaaS) solutions for Customer Engagement, Workforce Mobility, and Big Data Intelligence and Analytics to the Energy and Utility sector. We believe that the Utility business model will continue to evolve with the focus on Customer Engagement and Operational Efficiency through Mobile and Analytics technologies.

## TECHNOLOGY SPECIFICATIONS

Hardware ..... Supports Windows 10, IOS 9 and above, Android 5 & 6.