

# New Milsoft Visual Analytics

Powered by **ENVISION™**  
solidThinking

*When a picture says 1000 words...*

No one can deny the power of collected and stored data. Contained in a broad range of data sets available to you is critical information that needs to be extracted, disseminated, and shared with your teams. There is no better way to turn your operational data into valuable information than by using Milsoft's Visual Analytics tools, powered by Envision solidThinking. Milsoft will provide a standard set of versatile templates designed to give stakeholders graphical dashboard views of critical operations metrics. Milsoft also offers authorship rights and training so that you can customize your reports to suit your organization's needs.

With Milsoft Visual Analytics, you'll be able to visualize both the present and the past. For example, you can use dashboards during an outage that shows who's out of power, how many calls are coming in per minute or the current total duration of the outages. It's really up to your utility, but the ability to report critical operational metrics to your teams and your customers will improve situational awareness and communications that improve customer service. However, it does not stop there. Why not take archived data and compare them by year or by feeders or substations? Use that amazing collection of stored data and turn it into compelling information that could lead to significant changes for the better of the utility and your customers.

## About **ENVISION™** solidThinking

Envision, developed by solidThinking, is a modern cloud-based business intelligence platform for hosted and on-premises environments. Architected for an optimized self-service user experience, Envision speeds data visualization, exploration and analysis.

Envision meets the data analytics needs of today's utilities industry, including data analysis for customer service and billing, meter data aggregation, outage management, rate schedule analysis and optimization.

## *Standard Reports Package Included:*

- |  |  |   |   |
|--|--|---|---|
| 1) Current Outage system status <ul style="list-style-type: none"><li>- Dashboard</li><li>- Outage Information</li><li>- Crew Information</li><li>- District Information</li><li>- Caller Information</li><li>- Assessment Information</li><li>- Note Information</li></ul>  | 3) Outage Deltas <ul style="list-style-type: none"><li>- Yearly Outage Deltas</li><li>- Monthly Outage Deltas</li><li>- Yearly Duration Deltas</li><li>- Monthly Duration Deltas</li></ul>   | 5) Customer Circuit Overview <ul style="list-style-type: none"><li>- Circuit Customer Breakdown</li><li>- Circuit Drill</li><li>- Customer Drill</li><li>- Priority Customer Information (4 pages)</li><li>- Dashboard</li><li>- Substation Drill</li><li>- Report Name/Description</li><li>- Customer Outage Drill</li></ul> | 7) Priority Customer Information <ul style="list-style-type: none"><li>- Dashboard</li><li>- Substation Drill</li><li>- Circuit Drill</li><li>- Customer Outage Drill</li></ul> |
| 2) Circuit Performance <ul style="list-style-type: none"><li>- Yearly Substation Performance Comparison</li><li>- Yearly Feeder Performance Comparison</li><li>- Monthly Substation Performance Comparison</li><li>- Monthly Feeder Performance Comparison</li><li>- Worst Performing Circuit Dashboard</li><li>- Circuit Drill</li><li>- Device Drill</li><li>- Cause Drill</li></ul> | 4) Outage History <ul style="list-style-type: none"><li>- Dashboard</li><li>- Cause Drill</li><li>- District Drill</li><li>- Reporting Area Drill</li><li>- Daily Summary</li><li>- Outages</li><li>- Outage Type by Substation (Count)</li><li>- Outage Type by Substation (Duration)</li><li>- Substation Outage Type Drill</li><li>- Outage Details</li></ul> | 6) Assessments And Notes <ul style="list-style-type: none"><li>- Assessment Summary</li><li>- Heatmap Drill</li><li>- Category Drill</li><li>- Substation Drill</li><li>- Assessment Information</li><li>- Note Summary</li><li>- Note Information</li><li>- Outage Details</li></ul>   |   |

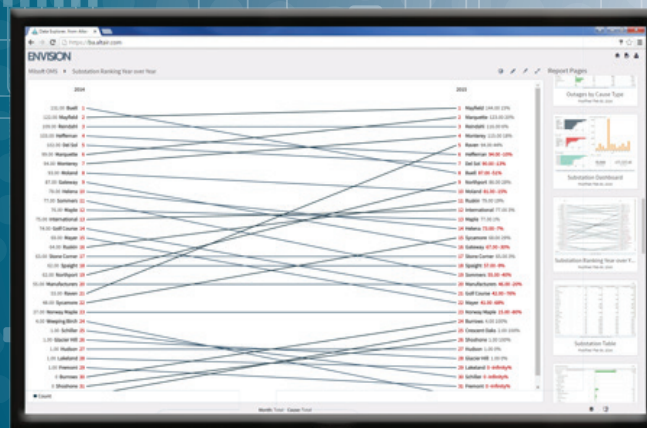
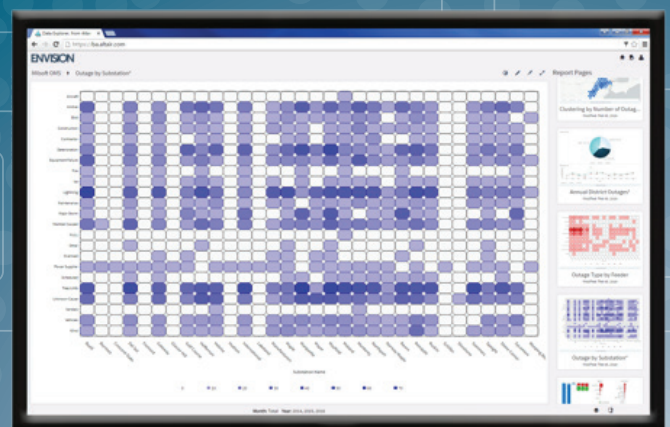
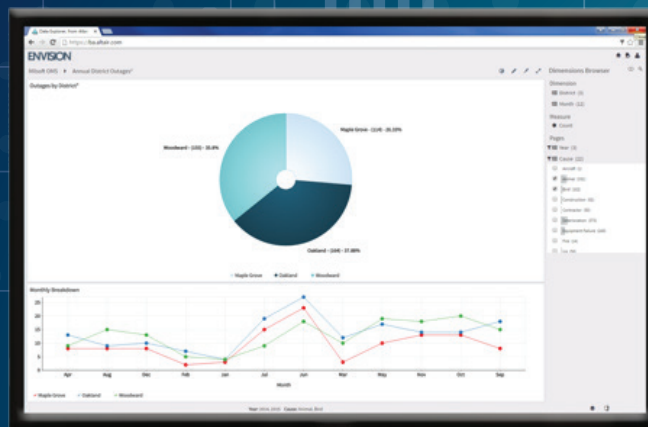
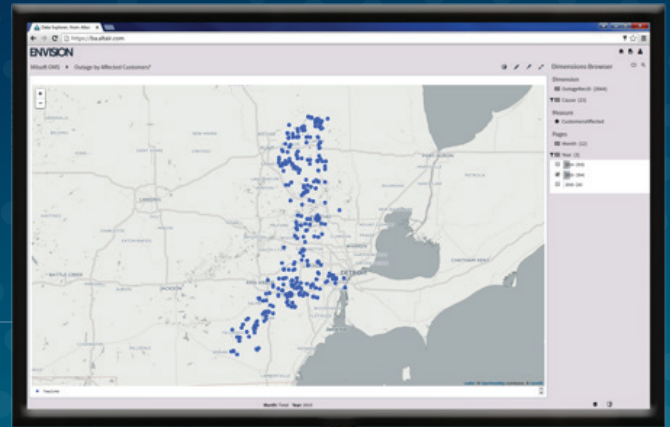
**MILSOFT**  
Utility Solutions

Find out more: [www.milsoft.com](http://www.milsoft.com) • 800-344-5647



# Here are a few sample views of **Milsoft Visual Analytics**

Powered by **ENVISION**  
solidThinking



## Hardware Requirements:

Microsoft Server 2008 R2 or newer / Microsoft  
Windows 7 or newer  
Quad-core processor  
16GB Ram (8GB Minimum)  
100GB HDD

Windows Server 2008 R2  
Windows Server 2012 R2  
Windows 7  
Windows 8.1  
Windows 10