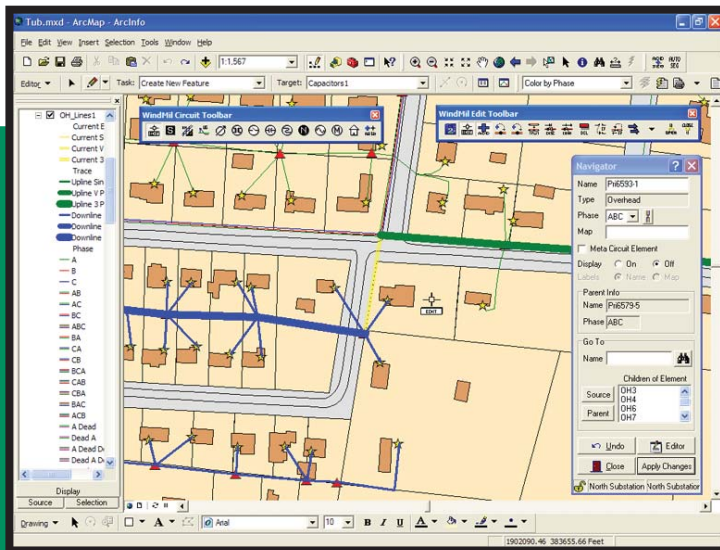


WindMilMap

WindMilMap

Designed to take the power of WindMil® and embed it in the ESRI® environment, WindMilMap provides a single data source for the electrical connectivity model used by both engineering analysis and GIS. Changes to the electrical model in WindMil or ESRI are universal and require no additional data conversion. With the release of WindMilMap, Milsoft and ESRI products can now

be mapped to use the same database.



The WindMil Connectivity Model provides ArcGIS Desktop with instant tracing, accurate connectivity and the power of WindMil.

WindMilMap provides ESRI users with WindMil's advanced connectivity model, making it possible to model and run analytical studies of both radial and looped electrical systems.

The addition of WindMil's toolset to ArcGIS® Desktop and relevant ArcGIS Engine applications simplifies the editing of circuit element properties, connectivity and associated equipment data. WindMil's proven

and perfected tools and dialogs can now be accessed and used in ESRI applications.

WindMilMap provides the ability to quickly define and switch between common electrical model symbols in ArcGIS Desktop and relevant ArcEngine applications. With the integration of WindMil's connectivity model, traces can be done and symbolized instantly. Enhanced WindMil display modes provide more flexibility while creating the appropriate layers for symbolizing by property and analysis results.



ESRI
Technology

**AUTHORIZED
BUSINESS PARTNER**

